

CORPORATE PROFILE 2025



MAGUCHI Group Co., Ltd.

1-5-29, Kaigan-Dori, Minato-ku, Osaka 552-0022
Tel.06-6572-5601(Main Telephone Number)/Fax.06-6572-5660



HP



Instagram



Facebook



YouTube

MAGUCHI Transportation Co., Ltd.
MAGUCHI Logistics Co., Ltd.
1st Company*2nd Company*3rd Company
MAGUCHI Kitakinki Co., Ltd.
MAGUCHI Tokai Co., Ltd.
MAGUCHI Logi Kanto Co., Ltd.
MAGUCHI Land Services Co., Ltd.
MAGUCHI Land Transportation Co., Ltd.
Uniteservice Co., Ltd.

MAGUCHI West Logi Co., Ltd.
MAGUCHI Value Trans Co., Ltd.
MAGUCHI General Service Co., Ltd.
Office Company
Food Process Co., Ltd.
WEST Company*EAST Company
Risorma Plus Co., Ltd.
SSS-Corporation Co., Ltd.

MAGUCHI Co., Ltd.
Shared Service Company*Asset Company
MAGUCHI Trading Co., Ltd.
MAGUCHI (Hong Kong) Co., Ltd.
Fillgreen Co., Ltd.
MAGUCHI Facilities Co., Ltd.
YORIKAKE Co., Ltd.

MAGUCHI Agri Factory Co., Ltd.
Shirotani Transportation Co., Ltd.
Hana LINKS Co., Ltd.

Vintage Co., Ltd.
Life Home Delivery Co., Ltd.
Porte-Bonheur Co., Ltd.

SONIX Co., Ltd.
NISHIJIMA Construction Industry Co., Ltd.
MOS Co., Ltd.

EXPO Business Company



MAGUCHI GROUP



PURPOSE

A company in
constant pursuit
of happiness

Well-being

We, the employees of the Maguchi Group,
want to be a company that constantly pursues and
thinks about what happiness (well-being)
is for our employees, their families, society, and the world.

The Maguchi Group will support
your lives and contribute to society
through its purpose.

Brand Symbol



PHILOSOPHY

The Maguchi Group has the
following philosophy,
and all our employees are working
towards the common goal of
"Contributing to Society and
Making Our Employees Happy".

Management Philosophy

**Contributing to Society and
Making Our Employees Happy**

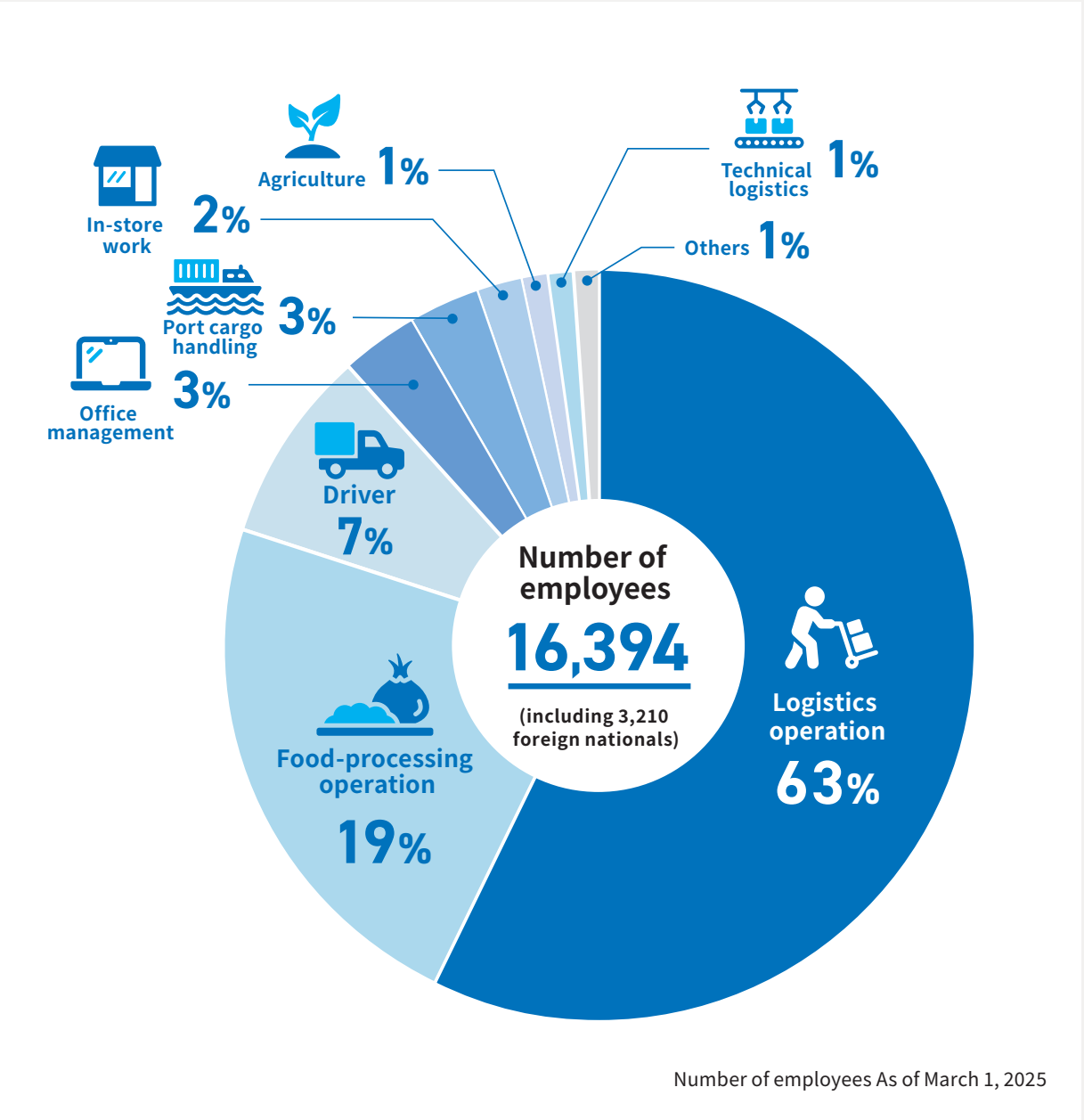
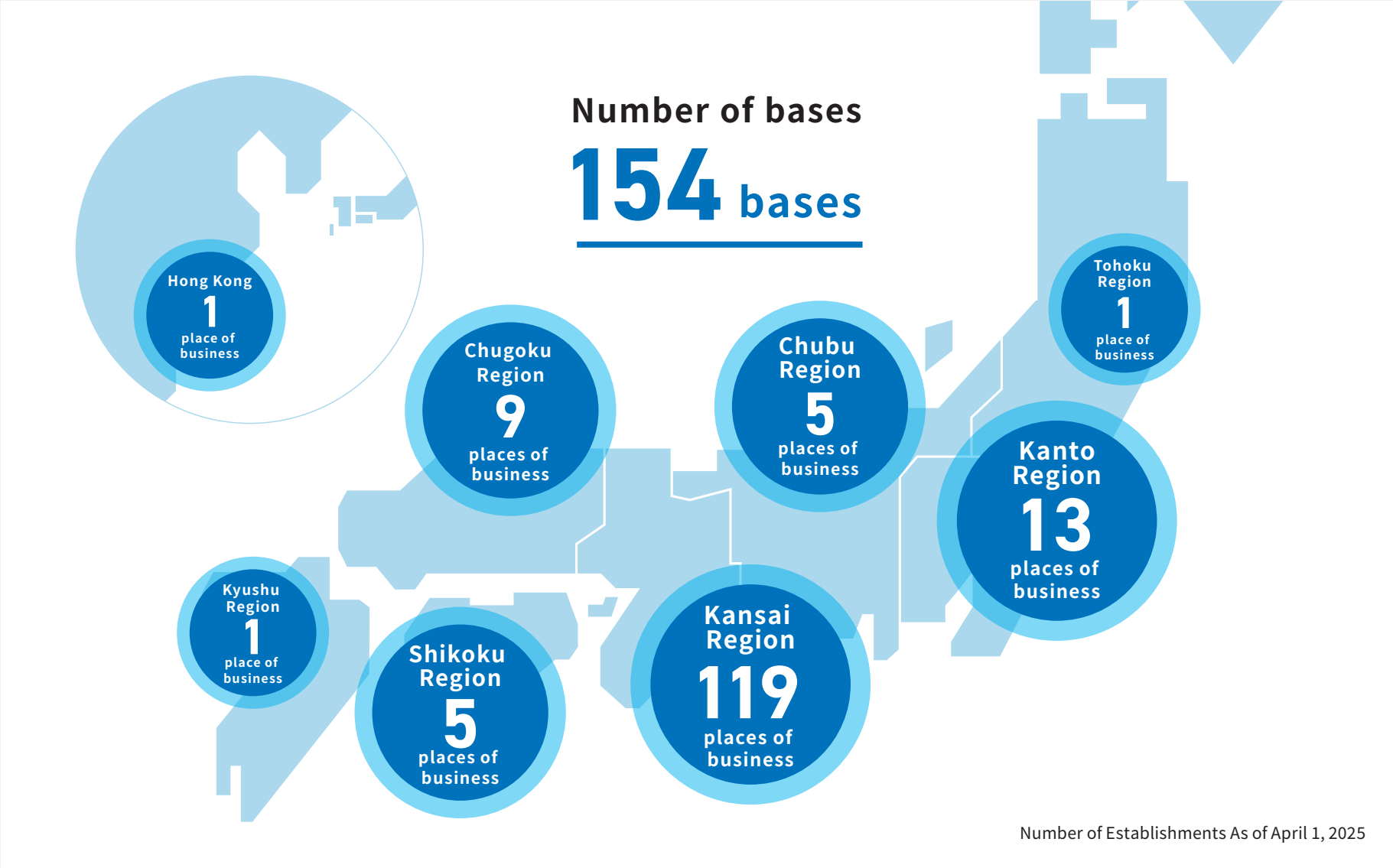
Management Principles

We don't want to be a group of companies that is
only about people, things and money.
We want to be connected to all things with our hearts.
With lofty ideals and a high level of wisdom as our goals,
we will not compromise between our ideals and reality,
and we will not lag behind the changes in society as time passes.
We will seek a better future, using information and data as our
sustenance, and leaving behind us a legacy of honor as we pass.

Company Creed

Cherish the harmony among people.
Earthly advantage is more important than heavenly time.
Man's harmony is more important than earthly advantage.





OVERVIEW

Group Overview

Location

1-5-29, Kaigan-Dori, Minato-ku, Osaka

Established

1901 (Meiji 34)

Company Representative

COO Takashi FUKUROI

VCOO Satoshi OGATA

Capital

882 million yen (total group capital)

Amount of sales

56,210 million yen

(fiscal year ending March 2024)

Number of employees

16,394

(As of March 1, 2025)

Regular employees : 1,747

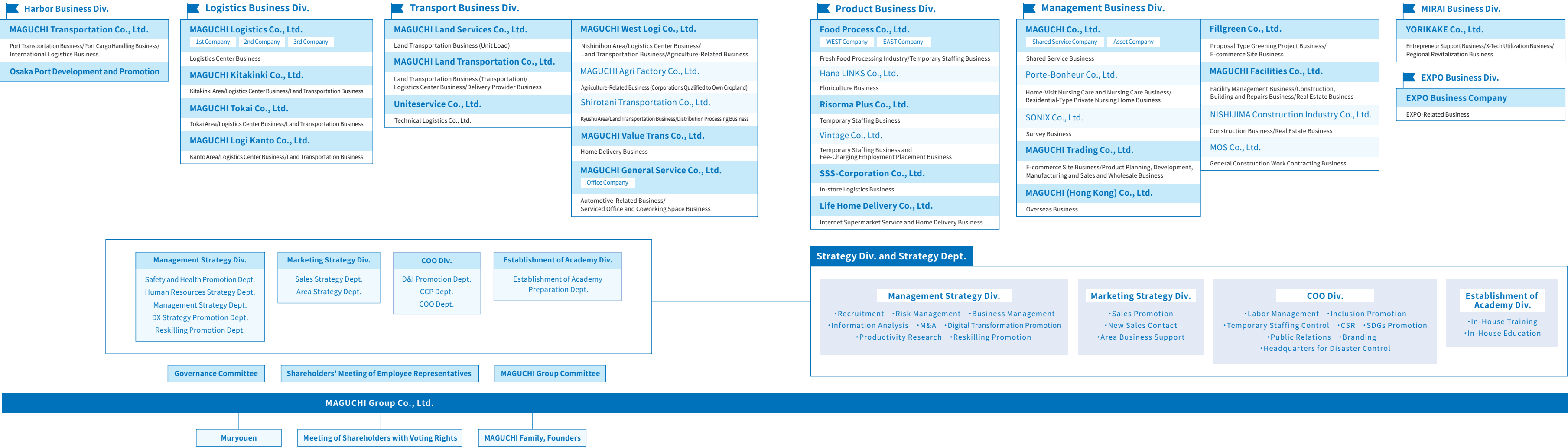
Staff employees : 8,155

Partner employees : 6,492



ORGANIZATION

Group organization chart



HISTORY

Company History

- 1901** (Meiji 34) July Established in Minatoya-cho, Nishi-ku, Osaka City, as a barge transportation company combining on-board cargo handling and coastal cargo handling
- 1925** (Taisho 14) January Established the general partnership company MAGUCHI-gumi
- 1937** (Showa 12) March Changed from a general partnership to a joint-stock company, and also engaged in the shipping cargo handling and ship agency business
- 1947** (Showa 12) June Established MAGUCHI Transportation Co., Ltd. (now MAGUCHI Group Co., Ltd.) and consolidated the ship and coastal cargo handling operations of MAGUCHI Construction Co., Ltd.
- 1948** (Showa 23) March Licensed as a customs broker and started customs brokerage business



1900~

1950~

- 1951** (Showa 26) August Registered as a general port transportation business, on-board cargo handling business, and coastal cargo handling business according to the Port Transportation Business Law (Old Law)
- 1954** (Showa 29) January Head office relocated to Chikko, Minato-ku, Osaka City (now Chikko Building)
- 1962** (Showa 37) December Obtained license for on-board cargo handling business at the Port of Osaka
- 1964** (Showa 39) March Opened the first in-house vocational training center in Japan
- September** Obtained license for general port transportation business (limited) at the Port of Osaka
- 1966** (Showa 41) September Started shipping agency and brokerage businesses



1970~

- 1970** (Showa 45) August Obtained license for customs brokerage from Osaka Customs according to the Customs Brokerage Act
- 1971** (Showa 46) October Started working in a distribution center for a major supermarket
- 1972** (Showa 47) February Started material handling business (in-store sorting, display, etc.) for a major supermarket
- 1973** (Showa 48) March Started food processing business
- October** Started working in a distribution center for a major consumer cooperative
- 1975** (Showa 50) June Established MAGUCHI Kousan Co., Ltd. as a support company for the group
- September** Part of the transportation business spun off from Senshu Unso Co., Ltd. and Nantaku Sangyo Co., Ltd. (now MAGUCHI Land Services Co., Ltd.) established
- 1976** (Showa 51) January MAGUCHI Vehicle Maintenance Co., Ltd. (now MAGUCHI General Service Co., Ltd.) established by the MAGUCHI Transportation Maintenance Division
- February** Started yard and distribution business for a major supermarket management company



1980~

- 1981** (Showa 56) April Obtained a license for warehousing business, and started operations at Senboku Warehouse
- 1982** (Showa 57) February Started marine container business (land transportation)
- 1985** (Showa 60) December Obtained a license for port cargo handling business (unlimited) for the Port of Osaka according to the Port Transportation Business Law
- 1986** (Showa 61) February Established the Tokyo office
- 1988** (Showa 63) April Established MAGUCHI Land Transportation Co., Ltd.



1990~

- 1993** (Heisei 5) November A Sino-Japanese joint venture company, JILIN Province CHANGBANG Transportation Co., Ltd. established in Jilin Province, China
- 1994** (Heisei 6) January Obtained a license for general port cargo transportation business (unlimited) for the Port of Osaka
- 1995** (Heisei 7) March Established MAGUCHI Material Handling Co., Ltd.
- December** Established a joint venture company, Guangzhou Global Logistics Corporation, in Guangdong Province, China
- 1996** (Heisei 8) July Started NVOCC business
- October** Established MAGUCHI Transportation (Hong Kong) Co., Ltd.
- 1999** (Heisei 11) October The port transportation business and customs brokerage business transferred to Shiomi Warehouse, and the company name changed to MAGUCHI Co., Ltd. as the group's management company
- The company name of Shiomi Warehouse Co., Ltd. changed to MAGUCHI Transportation Co., Ltd



2000~

- 2000** (Heisei 12) June Obtained a license for general worker dispatch business according to the Worker Dispatching Act
- 2002** (Heisei 14) August Acquired all shares of Uniteservice Co., Ltd.
- 2003** (Heisei 15) August The new head office building completed and the company relocated
- 2008** (Heisei 20) April The company name of MAGUCHI Trading Co., Ltd. changed to MAGUCHI World Trans Co., Ltd
- Kanto Branch Office opened in Tokyo, Nishinohon Branch Office opened in Hiroshima



2010~

- 2012** (Heisei 24) May Established MAGUCHI West Logi Co., Ltd.
- 2013** (Heisei 25) April From MAGUCHI Material Handling Co., Ltd., the logistics center business and in-store logistics business (material handling business) split off and integrated into MAGUCHI Co., Ltd.
- December** Established MAGUCHI Human Force Co., Ltd.
- 2014** (Heisei 26) February The company, obtained a license for general worker dispatch business
- 2015** (Heisei 27) April The company name of MAGUCHI Worldtrans Co., Ltd. changed to MAGUCHI Trading Co., Ltd.
- August** Acquired all shares of Taisei Co., Ltd.
- December** The in-store logistics business of MAGUCHI Co., Ltd. spun off and SSS Corporation Co., Ltd. established
- The Tokai and Kitakinki branch offices spun off from the MAGUCHI Co., Ltd., and the new companies, MAGUCHI Tokai Co., Ltd. and MAGUCHI Kitakinki Co., Ltd. established
- The Kanto branch office from MAGUCHI Material Handling Co., Ltd. spun off and Food Process Kanto Co., Ltd. established
- The individual delivery business spun off from MAGUCHI Land Transportation Co., Ltd. and MAGUCHI Value Trans Co., Ltd. established

2016~

- 2016** (Heisei 28) April The company name of MAGUCHI Material Handling Co., Ltd. changed to Food Process Co., Ltd.
- The company name of MAGUCHI Human Force Co., Ltd. changed to Risorma Plus Co., Ltd.
- August** Established MAGUCHI Agri Factory Co., Ltd. (Corporations Qualified to Own Cropland)
- 2017** (Heisei 29) January Risorma Plus Co., Ltd. acquired all shares of Vintage Co., Ltd.
- The agriculture-related business spun off from MAGUCHI West Logi Co., Ltd. and MAGUCHI Green Ex Co., Ltd. established
- April** The company name of Taisei Co., Ltd. changed to Hana LINKS Co., Ltd.
- August** The logistics center and warehouse businesses spun off from MAGUCHI Co., Ltd. and MAGUCHI Logistics Co., Ltd. established
- December** The company name of MAGUCHI Transportation (Hong Kong) Co., Ltd. changed to MAGUCHI (Hong Kong) Co., Ltd.
- MAGUCHI Trading Co., Ltd. acquired all shares of SONIX Co., Ltd.

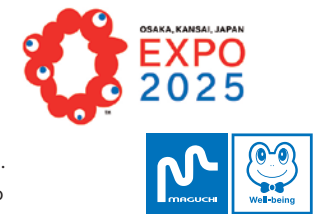


2018~

- 2018** (Heisei 30) January Established MAGUCHI Division Preparation Co., Ltd.
- April** The company name of MAGUCHI Co., Ltd. changed to MAGUCHI Holdings Co., Ltd. as the group's management company
- At the same time, MAGUCHI Co., Ltd. transferred its logistics business and general freight trucking business to MAGUCHI Logistics Co., Ltd. and management business (personnel, finance, planning, systems, general affairs, legal affairs, procurement) transferred to the MAGUCHI Division Preparation Co., Ltd.
- The company name of MAGUCHI Division Preparation Co., Ltd. changed to MAGUCHI Co., Ltd.
- 2019** (Heisei 31) (Reiwa 1) January MAGUCHI West Logi Co., Ltd. forms a capital and business alliance with Shirotani Transportation Co., Ltd.
- October** The flowerpot business of MAGUCHI Trading Co., Ltd. absorbed and split off into Hana LINKS Co., Ltd.
- December** The Kanto branch office spun off from MAGUCHI Logistics Co., Ltd. and MAGUCHI Logi Kanto Co., Ltd. established

2020~

- 2020** (Reiwa 2) April Food Process Kanto Co., Ltd. merged into Food Process Kanto Co., Ltd.
- MAGUCHI West Logi Co., Ltd. merged into MAGUCHI Green Ex Co., Ltd.
- The Facility management business spun off from MAGUCHI Co., Ltd. and MAGUCHI Facilities Co., Ltd. established
- August** MAGUCHI West Logi Co., Ltd. established a joint venture company, My Shimane Distribution Labo Co., Ltd. with the Shimane Consumer's Cooperative Union
- 2021** (Reiwa 3) April MAGUCHI Co., Ltd. becomes a shareholder of Porte-Bonheur Co., Ltd.
- SSS Corporation Co., Ltd. and MAGUCHI Logi Kanto established Life Delivery Co., Ltd. a joint venture with Life Corporation Co., Ltd.
- June** Established Fillgreen Co., Ltd.
- 2022** (Reiwa 4) April The company name of MAGUCHI Holdings Co., Ltd. changed to MAGUCHI Group Co., Ltd.
- July** MAGUCHI Facilities Co., Ltd. becomes a shareholder of Nishijima Construction Co., Ltd.



2023~

- 2023** (Reiwa 5) April Established YORIKAKE Co., Ltd.
- 2024** (Reiwa 6) November The shares in SONIX Co., Ltd. held by MAGUCHI Trading Co., Ltd. transferred to MAGUCHI Co., Ltd.
- December** Established MOS Co., Ltd.
- 2025** (Reiwa 7) February MAGUCHI Trading Co., Ltd. merged into MAGUCHI Transportation Co., Ltd.
- April** Established MAGUCHI Trading Co., Ltd. (The "MAGUCHI" in the Japanese name "MAGUCHI Trading" is written in katakana.)

SERVICE Business Introduction

MAGUCHI Group contributes to society as an essential company that supports people's lives

Since its establishment in 1901 (Meiji 34), MAGUCHI Group has been supporting people's lives as a comprehensive logistics company.

In recent years we are also involved in a wider range of projects.

“MAGUCHI Group in your daily life” Our wish is to continue to provide safety and security for everyone's smile.



01 Logistics Center

We support the optimization of on-site operations, from food products to everyday items

We provide logistics center management and on-site operations tailored to your needs, with high quality and extensive experience.



COMPANY

-MAGUCHI Logistics Co., Ltd. (1st Company・2nd Company・3rd Company) -MAGUCHI Kitakinki Co., Ltd. -MAGUCHI Tokai Co., Ltd.
-MAGUCHI Logi Kanto Co., Ltd. -MAGUCHI West Logi Co., Ltd. -MAGUCHI Land Transportation Co., Ltd. -Uniteservice Co., Ltd.

Logistics Center

On-site operations at Logistics Center
(Receiving/Sorting/Transshipping/Transportation/
Staging/Shipping/Warehouse Operation)



✓ Zutta
A semi-automatic towing robot to improve logistics efficiency

02 Food

Professionals in food safety management

From automated processing to the delicate processing of fresh foods, we deliver “Food Safety”.



COMPANY

-Food Process Co., Ltd. (WEST Company・EAST Company)

Processing of Fresh Foods

Process Center Operations
(Cooking and Processing/Plating/Packaging/Pricing/Sorting/Inspecting, etc.)
✓ Temporary staff specialising in the processing of fresh food and the handling of food products

03 Port and International

With over 120 years of experience, we provide safe and fast freight transportation

With over 120 years of experience in port operations, we provide port transportation, port cargo handling, customs clearance, storage, etc., centered on the Port of Osaka.

COMPANY

-MAGUCHI Transportation Co., Ltd. -MAGUCHI Trading Co., Ltd. -MAGUCHI (Hong Kong) Co., Ltd.



Port Transportation

General Port Transportation/Customs Clearance/ Shipping Agencies/Freight Forwarding/Warehousing (Bonded Warehouse/Designated Bonded Area)



Port Cargo Handling

Port Cargo Handling (on-board/coastal)



Overseas

Import and Sale of Various Materials and Products/ Real Estate Management



International Logistics

Freight Forwarding/Warehousing

04 Transportation and Vehicles

From the logistics center to the store and to your home, we deliver safely and reliably with thorough temperature control

We provide a range of transportation services, from large-scale transportation to delivery by light vehicle, as well as services such as vehicle inspections, maintenance and procurement.

COMPANY

-MAGUCHI Land Services Co., Ltd. -MAGUCHI Land Transportation Co., Ltd. -Uniteservice Co., Ltd. -MAGUCHI Value Trans Co., Ltd. -MAGUCHI General Service Co., Ltd. -MAGUCHI Kitakinki Co., Ltd. -MAGUCHI Tokai Co., Ltd. -MAGUCHI Logi Kanto Co., Ltd. -MAGUCHI West Logi Co., Ltd. -Shirohani Transportation Co., Ltd.



Delivery and Transportation

General Freight Transportation/Long Distance Transportation/Food Delivery (School Lunches, etc.)/ Special Transportation/Delivery Service/Collection and Transportation of Industrial Waste



Automotive-Related

Automotive Maintenance/Management of Automobiles and Industrial Vehicles and Equipment/Sales and Brokerage of Vehicles and Parts, Rental and Leasing



Delivery

Home Delivery



Light Freight Transportation

Internet Supermarket and Home Delivery Service Spot Delivery / **Light Cargo Service**

Click here for the Lite Cargo website



05 Facility Management

Facility Management partner for building and equipment safety and efficiency

From planning and design to construction and facility management, we draw on our years of experience and expertise in construction, renovation and remodeling.

COMPANY

-MAGUCHI Facilities Co., Ltd. -NISHIJIMA Construction Industry Co., Ltd. -MOS Co., Ltd. -Uniteservice Co., Ltd. -Hana LINKS Co., Ltd. -Fillgreen Co., Ltd. -MAGUCHI Co., Ltd.(Shared Service Company) -MAGUCHI Trading Co., Ltd.



Facility Management

Facility Management/Maintenance and Management/ Construction Planning and Quality Control/ Real Estate Consulting



Facilities and Renovations

Maintenance and Management of Facilities/ Interior Work/Renovation/Installation of Electrical Equipment and Lighting/Green Office



Private Lodging Business

Construction and Maintenance of Private Lodging/ Procurement of Operating Equipment/Development and Operation of Private Lodging-Related Business



Greening Measures

Greening Proposals/Planting and Decorative Design of Facilities, etc./Operation of an Online Flower Shop



Construction and Maintenance

Real Estate Sales/Building Maintenance and Inspections/Maintenance/Mold and Rust Control **Mold and Rust Control**



Mold and Rust Control

Protection of buildings from all types of moisture and oxidation.

06 Healthcare and Nursing

All for a smile. We deliver happiness by caring

We provide community-based medical and nursing services, including home nursing and care and the operation of Residential-Type Private Nursing Home.

COMPANY

-Porte-Bonheur Co., Ltd.



Operation of Nursing-Care Facilities

Residential-Type Private Nursing Home



Home Nursing and Care

Home Care Services, Medical Treatment (based on doctor's orders), Bathing, Meals, etc./ Housekeeping Assistance



Day Services

One Day Functional Training (Rehabilitation)

07 Life and Health

A life partner who is always there for you in your daily life and living

We provide services in a wide range of sectors, including in-store operations, household appliance and furniture delivery and installation, floriculture, agriculture and e-commerce.

COMPANY

-MAGUCHI West Logi Co., Ltd. -MAGUCHI Agri Factory Co., Ltd.
-Hana LINKS Co., Ltd. -Uniteservice Co., Ltd.
-SSS-Corporation Co., Ltd. -Life Home Delivery Co., Ltd.
-Fillgreen Co., Ltd. -MAGUCHI Co., Ltd.(Shared Service Company)
-MAGUCHI Trading Co., Ltd.



Technical logistics

Delivery, Assembly and Installation of Household Appliances and Furniture/Repair of Information Technology Equipment and Household Appliances/Interior Construction of housing equipment/Reception of Electrical Appliance Repairs



Agriculture-Related

Farm and Orchard Management/Sorting Facility Operation/ Farm Work Agency/Gift Distribution Processing



Store Operations

In-Store Operations/Promotions/Internet Supermarket Service/Home Delivery Operations



Life Support Sales

Sales of Health Support Products/ Operation of Closed EC sites



Floriculture

Flower Wholesaler/Flower Retailer/Direct Store Selling Imported Garden Supplies (Raka in Kita-ku, Kobe City)



Operation of a Nursery School

Operation of company-led Nursery School

08 Human Resources Support and Next Generation

Human resources for the future Entrepreneur development and support

We are also involved in the operation of incubation facilities, the support of entrepreneurs, and the temporary staffing and recruitment business, and we are committed to the revitalization of society.

COMPANY

-YORIKAKE Co., Ltd. -MAGUCHI General Service Co., Ltd.
-Food Process Co., Ltd. (WEST Company and EAST Company) -Risorma Plus Co., Ltd.
-Vintage Co., Ltd. -MAGUCHI Co., Ltd. (Shared Service Company and Asset Company)
-MAGUCHI Trading Co., Ltd. -SONIX Co., Ltd.



Temporary Staffing

Temporary Staffing/Fee-Charging Employment Placement/ Recruitment Agency/International Student Sending



Shared Service

Accounting and Finance/Payroll and Human Resources/ General Affairs, Legal Health and Safety Affairs/ Procurement Affairs



Operation of Serviced Office

Operation of Serviced Office, Coworking Space and Common space



Survey

Surveys/Traffic Surveys



Support for Entrepreneurial Development

Management and Operation of University Incubation Facilities/Facility Production



Utilization of X-tech

Utilization of Drones/Robots, Avatars, and the Latest Mobility

SUSTAINABILITY

Sustainability of MAGUCHI Group



Efforts for Safety and Security



MAGUCHI Group Safety Philosophy

Striving for a better environment

Let's all think together, help each other, and work hard together

To achieve zero disasters with perseverance



01 / Efforts to obtain G-mark certification

G-Mark certification is awarded to many of MAGUCHI Group's facilities. The G-Mark System (Safety Excellence Business Office Certification System) is a safety certification system operated by the Japan Trucking Association.



02 / Transportation Safety Management

In October 2006, the Law on Road Transportation Safety Management was revised and the Transportation Safety Management System was introduced to further improve transportation safety. Safety policies, objectives, plans, etc. are developed and published annually by all employees.

03 / Safety and Health Inspection

To ensure that everyone can work in a safe environment by following safety rules, we work to raise employee safety awareness. We also provide guidance and instruction on manners and morals, such as greetings and personal appearance.

04 / ISO45001 certified MAGUCHI Transportation Co., Ltd.

In 2023, we obtained certification for ISO 45001, the international standard for an occupational health and safety management systems (OSHMS).



05 / BCP (Business Continuity Plan) measures

To support our employees and their families, as well as our customers and the local community, in the event of a major natural disaster, we maintain disaster supplies at 12 locations across the country.

06 / AI-equipped driving recorder

We introduced a driving recorder that uses AI to detect dangerous situations while driving, such as looking away from the road or falling asleep, and then issues warnings and shares the information in real time.

We pursue happiness and continue to work toward the realization of a sustainable society

MAGUCHI Group is actively working toward the realization of a sustainable society as a company aware of the pursuit of the happiness (well-being) of all people.

In order to harmonize with society and contribute to its development, we will continue to make further efforts.

Approaches to Environmental Issues

01 / CO₂ reduction

The vehicles used for transportation are equipped with digital tachographs. We promote eco-driving, which is safe, efficient, and contributes to the reduction of CO₂ emissions. The Group has also installed approximately 1,100 solar panels on its premises and is developing a solar energy business.



03 / MAGUCHI GO GREEN PROJECT

"A Clean Planet for Future Generations"
MAGUCHI Group supports the efforts of "Go Green Japan" and participates in water quality improvement activities that use recycled resources (used body warmers) for the purpose of protection of the natural environment. From 2021, the "MAGUCHI GO GREEN PROJECT" has been established within the Group. In preparation for full operations, we are strengthening our organization.



02 / Green Management certified

As part of our efforts to prevent global warming, we are promoting environmentally friendly management and obtained the Green Management Certification. As a logistics company, we are committed to being environmentally friendly and will continue to work towards this goal.

Nishinomiya Sales Office
Certification number : T280146-2(6)
Seishin Sales Office
Certification number : T280146-1(6)
Yamashiro Sales Office
Certification number : T260056-1(5)
Jonan Sales Office
Certification number: T260056-2(5)



04 / Minato SDGs Partner Registration

MAGUCHI Transportation Co., Ltd. was registered in the Minato SDGs Partner Registration System, which supports efforts to achieve the SDGs and is supported and promoted by the Ports and Harbors Bureau of the Ministry of Land, Infrastructure, Transport and Tourism.



05 / Introduction of EV vehicles

MAGUCHI Land Transportation Co., Ltd. introduced EV trucks that emit no CO₂ or pollutants as part of its decarbonization efforts.



Approaches to Diversity



01 / Diversity & Inclusion Promotion

We have worked to create jobs and opportunities for people with disabilities in partnership with local communities and society. We actively provide work experience for students from special needs school, etc., and help them with job placement. Our goal is to create a society in which people can work together without being constrained by the legal rate of employment. We will achieve "Diversity & Inclusion" by making the most of the abilities of all employees, regardless of gender, age, disability, employment status, nationality, sexual orientation, and gender identity, etc.

02 / Supporting athletes' second careers

"Career Design Project" assists athletes who retired from active competition in transitioning to a second career. We also focus on matching companies with individuals who can make use of their talents and experience, fostering a sense of second careers among the active athletes, and promoting interaction between companies and athletes.



Career Design Project HP

03 / Establishment of Basic Guidelines for Accepting Foreigners

We established the "MAGUCHI Group Basic Guidelines for Accepting Foreigners" in support of the "Basic Guidelines for Accepting Foreigners" established by The Federation of Consumer Goods Industries and Consumer's Associations (Seidanren).



04 / Collaboration with External Management Inclusive Research Project

This is a project that conducts research and approaches to enable people from different backgrounds and with different characteristics to participate and play an active role in society and organizations on an equal basis. To achieve an inclusive society, we aim to create a society that respects diversity and in which everyone can participate.

Supports for Society



01 / MAGUCHI Group Yu Yu Kai activities

In 1999, we established the Yu Yu Kai to help all Group employees support each other and contribute to society. Membership dues are used to donate to various volunteer groups, local welfare facilities, disaster relief organizations, and to provide condolences and assistance to injured or disaster-affected employees. MAGUCHI Group also donates to Red Cross, UNICEF, and other organizations.

02 / LINE stamp proceeds utilization

Stamps featuring the Group's branded symbol character "Magupyon" are on sale. All proceeds, excluding commission fees, are donated through MAGUCHI Group Yu Yu Kai and used for disaster relief and other purposes.



Main Recipients of Donations

Uminoko Gakuen Iribune-Ryo, Ikejima Ryo/First-aid facilities station
Minato Ryo/National Council of Social Welfare, Minato-ku, Osaka City
Goodwill Donation the Japanese Red Cross Society/Japan Committee for UNICEF/Scholarship Society for Orphans of Traffic Accident Victims (Ashinaga Foundation)

Supports for Local Communities



01 / Regular cleaning activities around the head office building

Every two months, about 100 employees from the head office take part in a clean-up campaign around the MAGUCHI Group head office building. We work to preserve the local environment as a member of the local community.



02 / Donation to local activities

MAGUCHI Group Yu Yu Kai makes donations to various organizations through social welfare facilities and Minato-ku. During the coronavirus pandemic, we donated food and clothing to Japan Community Health care Organization Osaka Bay Central Hospital.



Efforts for Employee Health



01 / Health management promotion

To promote the health of our employees, we established a Health Management Office in our head office building. MAGUCHI Co., Ltd. and MAGUCHI Land Service Co., Ltd. are certified as a "KENKO Investment for Health 2025 (Small and Medium-Sized Corporation Division)" by The Nippon Kenko Kaigi. This is the sixth year in a row that MAGUCHI Co., Ltd. has received the certification.



02 / Internal communication promotion

As part of our activities to foster communication among employees, we support club activities within the company. We also run a "Team Building Strengthening Program" through futsal.

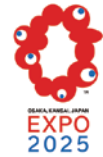


03 / Well-being Management - "Happiness for Employees"

We are working to create a better work environment, for example by opening 9 company-led Nursery School in MAGUCHI Group Co., Ltd. MAGUCHI Co., Ltd. has received certification as a "Leading Companies with Actively Participating Women in Osaka City" and is registered as a business operator under the Osaka Prefecture "Declaration of Lively and Healthy Men and Women (Danjo Ikiiki Kenko Sengen)" program.



PROJECT
2025: Osaka-Kansai Expo



01 / Selected as "Designated On-site Freight Handling Company" for Osaka/Kansai Expo

The joint venture of the Sumitomo Warehouse Group and MAGUCHI Group was selected as "Designated On-site Freight Handling Company" and "Recommended Logistics Provider" for the Osaka/Kansai Expo 2025. In particular, to ensure safety and improve operational efficiency, freight handling and logistics within the Expo site is limited to designated on-site freight handling company.

02 / "TEAM EXPO 2025" Program Co-Creation Partner Registration

MAGUCHI Group Co., Ltd. is registered as a co-creation partner for the "TEAM EXPO 2025" program. With the goal of "Nurturing and supporting startup entrepreneurs from Osaka and Japan, and using their ideas and technologies to contribute to the achievement of the SDGs, which are common global challenges", we hope to create social contribution type innovation by disseminating the wisdom of various startup entrepreneurs, and thus become a "Testing ground for the future society" which is the concept of the Expo.



Development of the semi-automatic towing and conveying robot "Zutta"

MAGUCHI Group developed the semi-automatic towing and conveying robot "Zutta" in collaboration with Keisu Giken Co., Ltd. The "Zutta" can transport freight in three modes: (1) Follow mode, (2) Remote control mode, and (3) Automatic mode (currently under development). It can be deployed without the need for equipment updates, and in terms of safety, it detects and avoids obstacles without contact, and if it comes into contact with an obstacle, the tires are locked to prevent accidents. It currently operates both inside and outside the Group, contributing to the efficiency of logistics operations.



MAGUCHI Group Sports Activities

MAGUCHI Group is involved in a variety of sports activities to promote the health and interaction of its employees. The sumo and baseball clubs in particular have a long history and track record, and are strong teams that have won prizes at national tournaments. The sumo club has been active in the Nishinihon Corporate Games, etc., and the baseball club has also achieved good results in the Corporate League. The Kendo Club, Cutter Club and Tennis Club are also active. It serves as a place for cross-generational interaction and plays an important role in strengthening bonds between employees.

Training facility Muryouen



MAGUCHI Sumo Dojo

In addition to the activities of MAGUCHI Group Sumo Club, this is also the site of the Takaishi Sumo School, where they can learn about sumo in a fun way from former sumo wrestlers.



Muryouen is widely used as a place where everyone associated with MAGUCHI Group, including employees, customers, business partners and local people, can "gather, learn, chat, sing and play".

MAGUCHI History Museum

Photographs and other materials from over 120 years of MAGUCHI Group history are displayed here.



Group symbol character "Magupyon"

The symbol representing "Happiness" is familiar to everyone as the character "Magupyon". It is also used in truck and company logos. Please try to find it.

